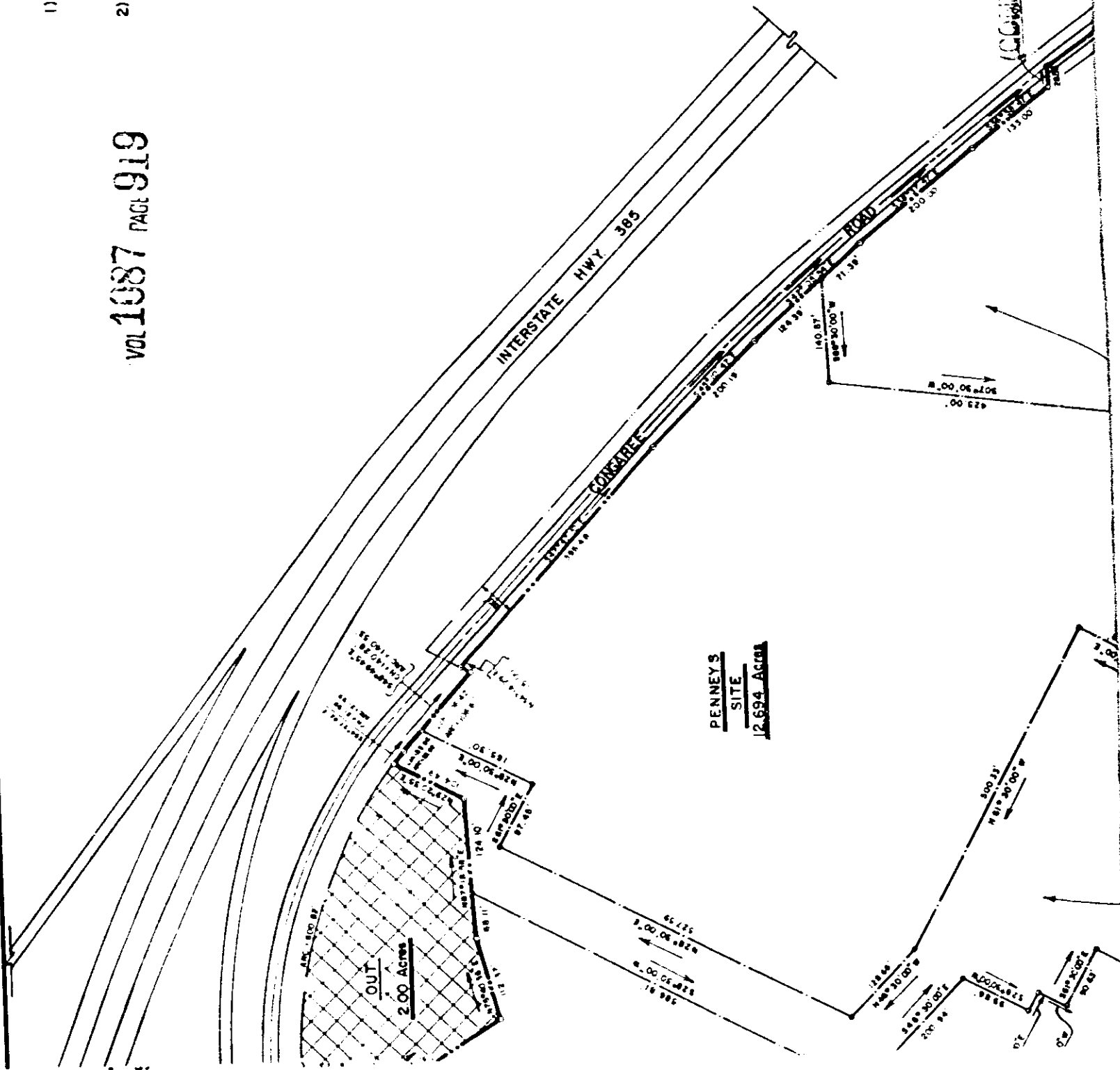


NOTES:

- 1) COMPILED BY COMPUTER FROM PREVIOUS SURVEYS.
- 2) ALL POINTS ON CENTERLINE OF ROADS ARE NAIL & CAPS; ALL OTHER EXTERIOR POINTS OF TOTAL BOUNDARY ARE IRON PINS UNLESS OTHERWISE NOTED.

VOL 1087 PAGE 919



(CONTINUED ON NEXT PAGE)